

**AMBASSADOR**

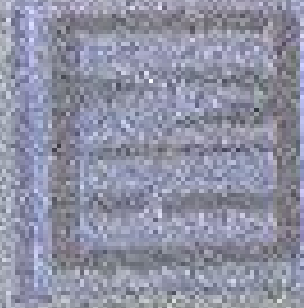
**HH**

**17146 1002**

# THE AMBASSADOR

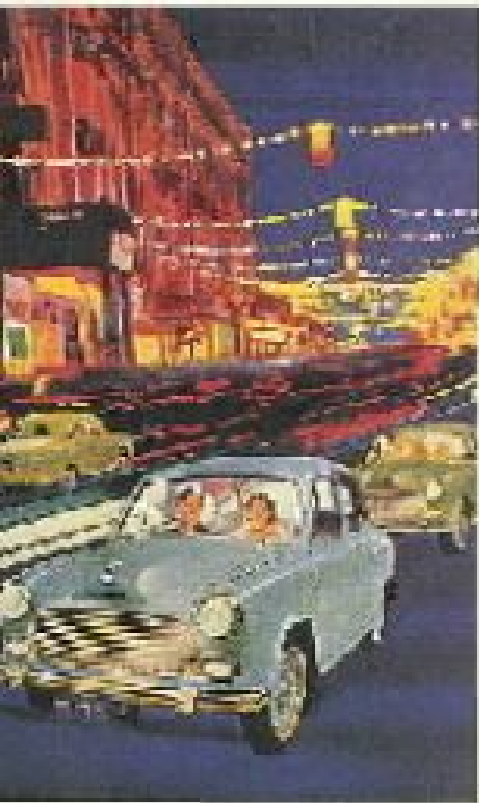
AN INSTITUTION CONSERVING

THE TRADITIONAL FLAVOR OF BRITAIN





# HISTORY OF THE



1950-1951: The first year of the Ambassador was a success. It was the first year that the car was available in a two-door version. The car was a success because it was the first year that the car was available in a two-door version.

1952-1953: The second year of the Ambassador was a success. It was the first year that the car was available in a four-door version. The car was a success because it was the first year that the car was available in a four-door version.

1954-1955: The third year of the Ambassador was a success. It was the first year that the car was available in a six-door version. The car was a success because it was the first year that the car was available in a six-door version.

1956-1957: The fourth year of the Ambassador was a success. It was the first year that the car was available in a two-door version. The car was a success because it was the first year that the car was available in a two-door version.

1958-1959: The fifth year of the Ambassador was a success. It was the first year that the car was available in a four-door version. The car was a success because it was the first year that the car was available in a four-door version.

1960-1961: The sixth year of the Ambassador was a success. It was the first year that the car was available in a six-door version. The car was a success because it was the first year that the car was available in a six-door version.

1962-1963: The seventh year of the Ambassador was a success. It was the first year that the car was available in a two-door version. The car was a success because it was the first year that the car was available in a two-door version.

1964-1965: The eighth year of the Ambassador was a success. It was the first year that the car was available in a four-door version. The car was a success because it was the first year that the car was available in a four-door version.



1952-1953



1954-1955



1956-1957



1958-1959

# AMBASSADOR

The first year of the Ambassador was a success. It was the first year that the car was available in a two-door version. The car was a success because it was the first year that the car was available in a two-door version.

The second year of the Ambassador was a success. It was the first year that the car was available in a four-door version. The car was a success because it was the first year that the car was available in a four-door version.

The third year of the Ambassador was a success. It was the first year that the car was available in a six-door version. The car was a success because it was the first year that the car was available in a six-door version.

The fourth year of the Ambassador was a success. It was the first year that the car was available in a two-door version. The car was a success because it was the first year that the car was available in a two-door version.

The fifth year of the Ambassador was a success. It was the first year that the car was available in a four-door version. The car was a success because it was the first year that the car was available in a four-door version.

The sixth year of the Ambassador was a success. It was the first year that the car was available in a six-door version. The car was a success because it was the first year that the car was available in a six-door version.

The seventh year of the Ambassador was a success. It was the first year that the car was available in a two-door version. The car was a success because it was the first year that the car was available in a two-door version.

The eighth year of the Ambassador was a success. It was the first year that the car was available in a four-door version. The car was a success because it was the first year that the car was available in a four-door version.

VELOCITY FIRST. MORRIS 1950

THE MOST SENSITIVE MOTOR IN THE WORLD. MORRIS 1950

THE MOST SENSITIVE MOTOR IN THE WORLD. MORRIS 1950

A SENSE OF BEING HOME IN THE CIRCUS

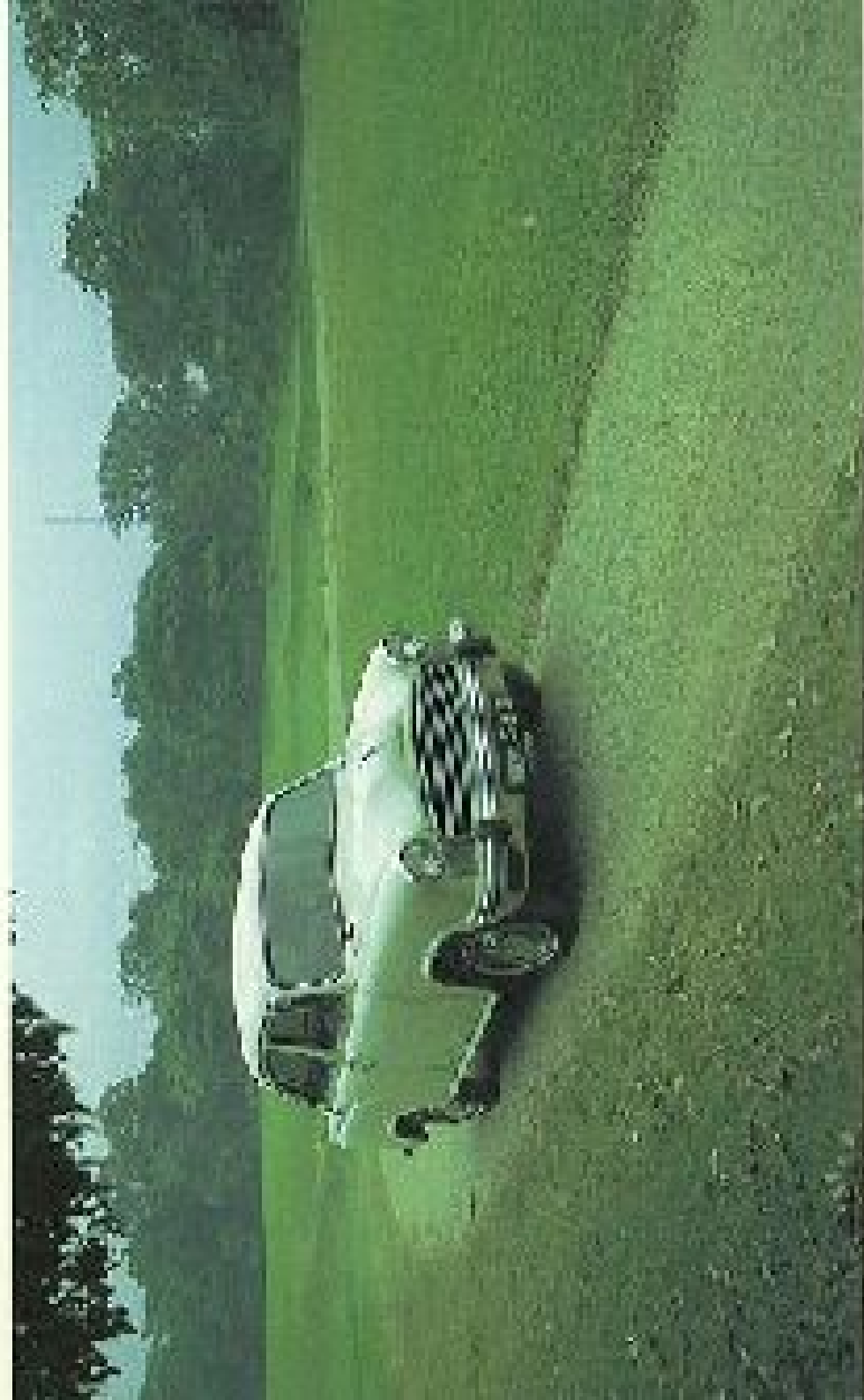
A SENSE OF BEING HOME IN THE CIRCUS

THE MOST SENSITIVE MOTOR IN THE WORLD. MORRIS 1950

MORRIS 1950







Center, to provide an elegant, welcoming environment in which the driver and passengers relax, and enjoy a superior driving experience without distraction or concern about the driver's environment and handling of the vehicle.



2010年9月、トヨタ自動車は、  
由緒長い自動車販売業  
新業態として、  
「トヨタ・ドットコム」を  
正式に発表。トヨタ自動車は、  
従来の販売方法と  
「トヨタ・ドットコム」を  
併用して販売する。













## SPECIFICATIONS AMBASSADOR TYPE I

AMBUSSADOR	MODEL	DESCRIPTIONS
420	25-30, 30-35	25-30-35-35-35
425	35-40, 40-45	35-40-45-45-45
430	45-50, 50-55	45-50-55-55-55
435	55-60, 60-65	55-60-65-65-65
440	65-70, 70-75	65-70-75-75-75
445	75-80, 80-85	75-80-85-85-85
450	85-90, 90-95	85-90-95-95-95
455	95-100, 100-105	95-100-105-105-105
460	105-110, 110-115	105-110-115-115-115
465	115-120, 120-125	115-120-125-125-125
470	125-130, 130-135	125-130-135-135-135
475	135-140, 140-145	135-140-145-145-145
480	145-150, 150-155	145-150-155-155-155
485	155-160, 160-165	155-160-165-165-165
490	165-170, 170-175	165-170-175-175-175
495	175-180, 180-185	175-180-185-185-185
500	185-190, 190-195	185-190-195-195-195
505	195-200, 200-205	195-200-205-205-205
510	205-210, 210-215	205-210-215-215-215
515	215-220, 220-225	215-220-225-225-225
520	225-230, 230-235	225-230-235-235-235
525	235-240, 240-245	235-240-245-245-245
530	245-250, 250-255	245-250-255-255-255
535	255-260, 260-265	255-260-265-265-265
540	265-270, 270-275	265-270-275-275-275
545	275-280, 280-285	275-280-285-285-285
550	285-290, 290-295	285-290-295-295-295
555	295-300, 300-305	295-300-305-305-305
560	305-310, 310-315	305-310-315-315-315
565	315-320, 320-325	315-320-325-325-325
570	325-330, 330-335	325-330-335-335-335
575	335-340, 340-345	335-340-345-345-345
580	345-350, 350-355	345-350-355-355-355
585	355-360, 360-365	355-360-365-365-365
590	365-370, 370-375	365-370-375-375-375
595	375-380, 380-385	375-380-385-385-385
600	385-390, 390-395	385-390-395-395-395
605	395-400, 400-405	395-400-405-405-405
610	405-410, 410-415	405-410-415-415-415
615	415-420, 420-425	415-420-425-425-425
620	425-430, 430-435	425-430-435-435-435
625	435-440, 440-445	435-440-445-445-445
630	445-450, 450-455	445-450-455-455-455
635	455-460, 460-465	455-460-465-465-465
640	465-470, 470-475	465-470-475-475-475
645	475-480, 480-485	475-480-485-485-485
650	485-490, 490-495	485-490-495-495-495
655	495-500, 500-505	495-500-505-505-505
660	505-510, 510-515	505-510-515-515-515
665	515-520, 520-525	515-520-525-525-525
670	525-530, 530-535	525-530-535-535-535
675	535-540, 540-545	535-540-545-545-545
680	545-550, 550-555	545-550-555-555-555
685	555-560, 560-565	555-560-565-565-565
690	565-570, 570-575	565-570-575-575-575
695	575-580, 580-585	575-580-585-585-585
700	585-590, 590-595	585-590-595-595-595
705	595-600, 600-605	595-600-605-605-605
710	605-610, 610-615	605-610-615-615-615
715	615-620, 620-625	615-620-625-625-625
720	625-630, 630-635	625-630-635-635-635
725	635-640, 640-645	635-640-645-645-645
730	645-650, 650-655	645-650-655-655-655
735	655-660, 660-665	655-660-665-665-665
740	665-670, 670-675	665-670-675-675-675
745	675-680, 680-685	675-680-685-685-685
750	685-690, 690-695	685-690-695-695-695
755	695-700, 700-705	695-700-705-705-705
760	705-710, 710-715	705-710-715-715-715
765	715-720, 720-725	715-720-725-725-725
770	725-730, 730-735	725-730-735-735-735
775	735-740, 740-745	735-740-745-745-745
780	745-750, 750-755	745-750-755-755-755
785	755-760, 760-765	755-760-765-765-765
790	765-770, 770-775	765-770-775-775-775
795	775-780, 780-785	775-780-785-785-785
800	785-790, 790-795	785-790-795-795-795
805	795-800, 800-805	795-800-805-805-805
810	805-810, 810-815	805-810-815-815-815
815	815-820, 820-825	815-820-825-825-825
820	825-830, 830-835	825-830-835-835-835
825	835-840, 840-845	835-840-845-845-845
830	845-850, 850-855	845-850-855-855-855
835	855-860, 860-865	855-860-865-865-865
840	865-870, 870-875	865-870-875-875-875
845	875-880, 880-885	875-880-885-885-885
850	885-890, 890-895	885-890-895-895-895
855	895-900, 900-905	895-900-905-905-905
860	905-910, 910-915	905-910-915-915-915
865	915-920, 920-925	915-920-925-925-925
870	925-930, 930-935	925-930-935-935-935
875	935-940, 940-945	935-940-945-945-945
880	945-950, 950-955	945-950-955-955-955
885	955-960, 960-965	955-960-965-965-965
890	965-970, 970-975	965-970-975-975-975
895	975-980, 980-985	975-980-985-985-985
900	985-990, 990-995	985-990-995-995-995
905	995-1000, 1000-1005	995-1000-1005-1005-1005

